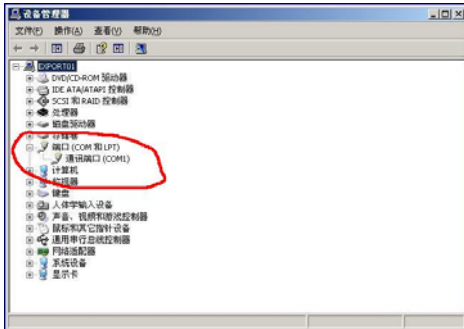
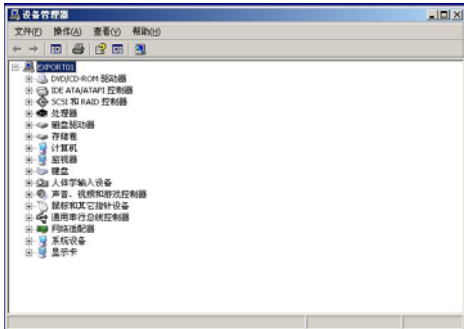


## Guide to USB Cable Installation

- 1) The USB cable has a converter to set your USB port as a COMM port(Serial RS-232).
- 2) Don't plug the cable to your computer before you install the driver.
- 3) Before installation, your hardware lists like this:



Or if you don't have a COMM port with your computer:



- 4) Insert the software CD, in the path of “[DRIVE: \USB Cable\XP], click and run “USB DataCable Driver.exe”.



- 5) Click “NEXT” to install the USB driver:



- 6) Click “Finish” to quit driver installation.

We recommend that you quit all the running program and reboot your computer.

- 7) Plug your USB cable into any one of your USB port. Your computer will prompt “New Hardware Found”.

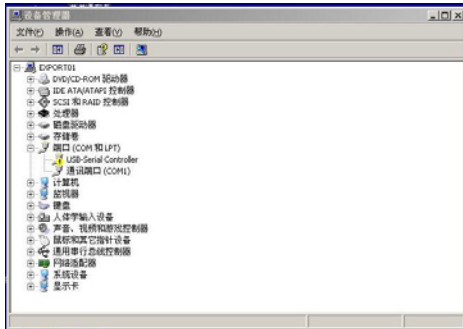


8) And recognizes name of hardware:



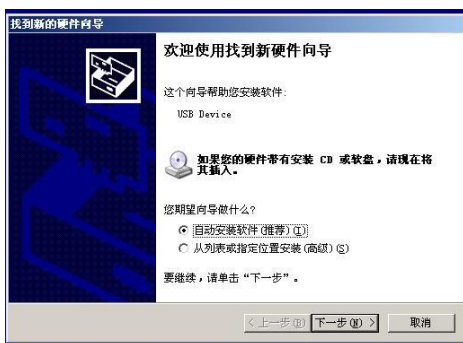
9) Normally you can use your USB cable now.

10) However, in system "Hardware List" if you find:



Double click "USB Serial Control"

11) You will see "NEW HARDWARE WIZARD":



Choose "Auto search" and click "NEXT".

12) You will see:

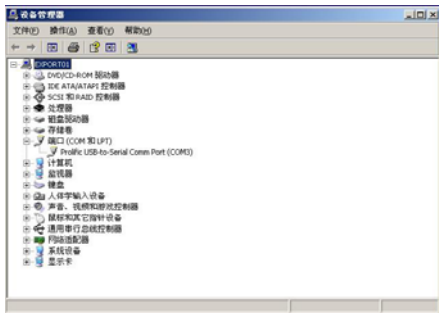




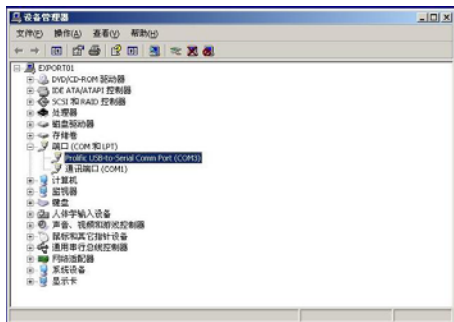
13) Click “Finish”:



14) Go to “Hardware List” to check the serial port:



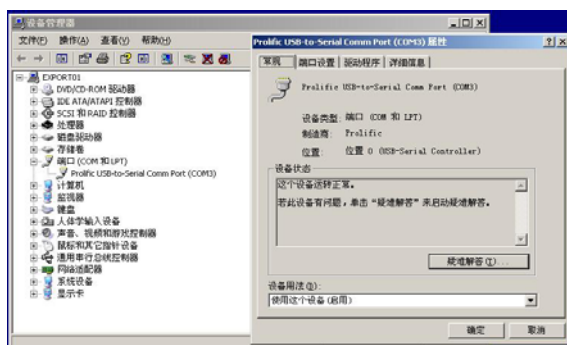
Or if you have a serial port in your computer:



15) Now you can use COM3 as your COMM port for your USB program cable. In your computer it may be any of the port numbers other than COM3.

If you want you set the port number: (Ignore if you don't wish to change port number)

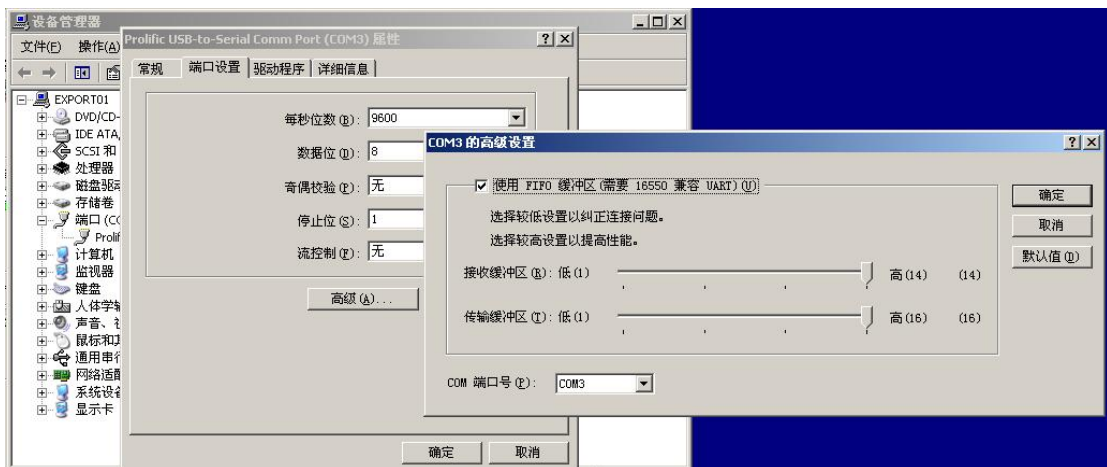
a) Click “Prolific USB-to-Serial COMM Port(COM3)”



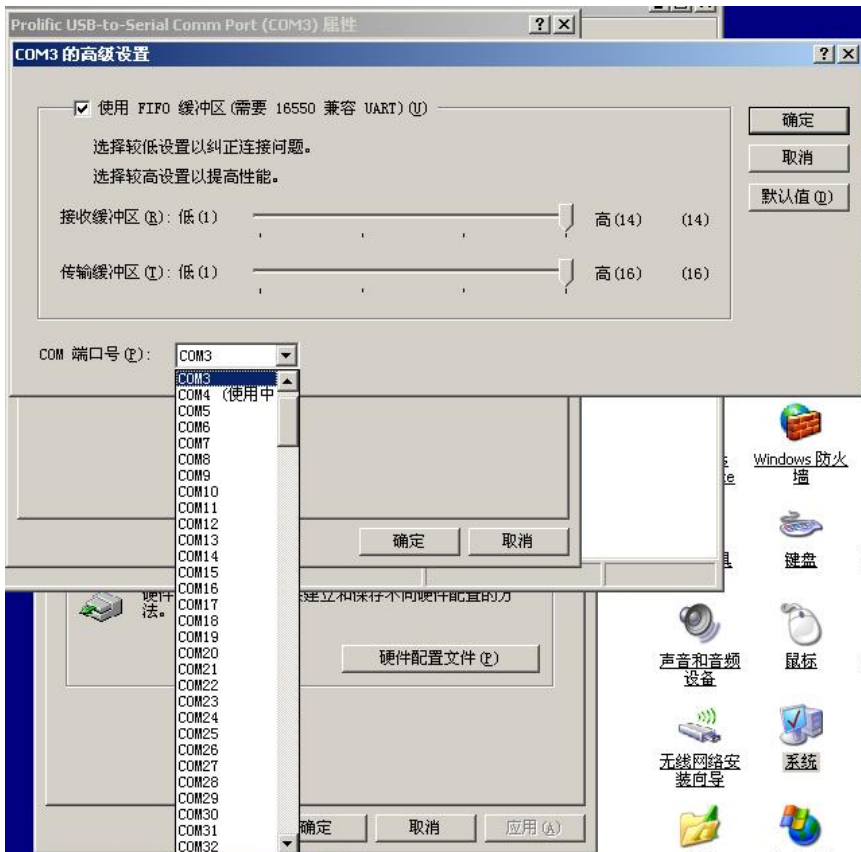
b)Click the second TAB “Port Setting”



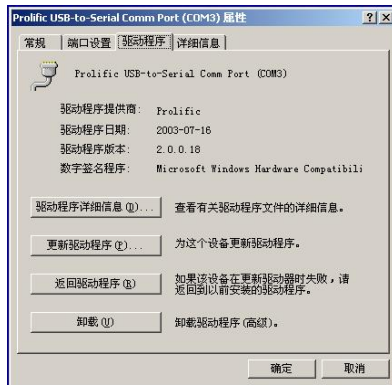
c)Click Advanced(A):



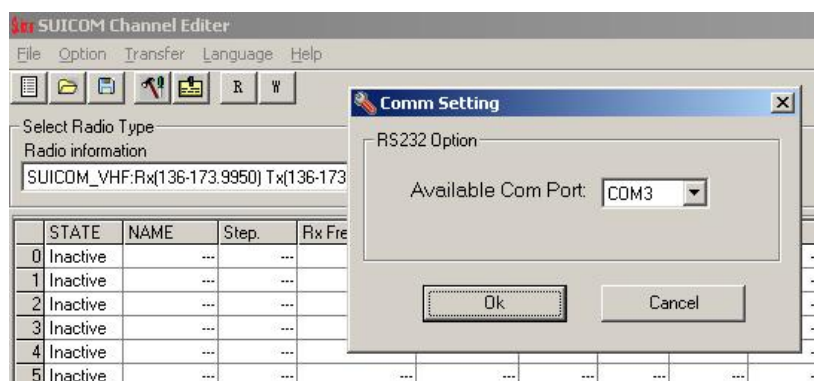
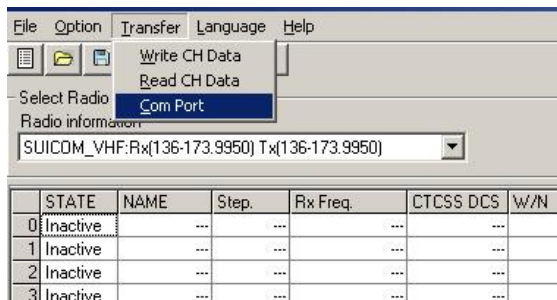
d)Choose COM PORT number you desire(unless it is already in use).



16) Not necessary to change other tabs:



17) Set correspondent COMM Port number in your Transceiver Program:



(YC-M01 Program)





(YC-155 Program)

- 18) Note: Some Transceiver Programs only allow COMM port 1-4, set your USB cable to proper port number in step 15-d.